



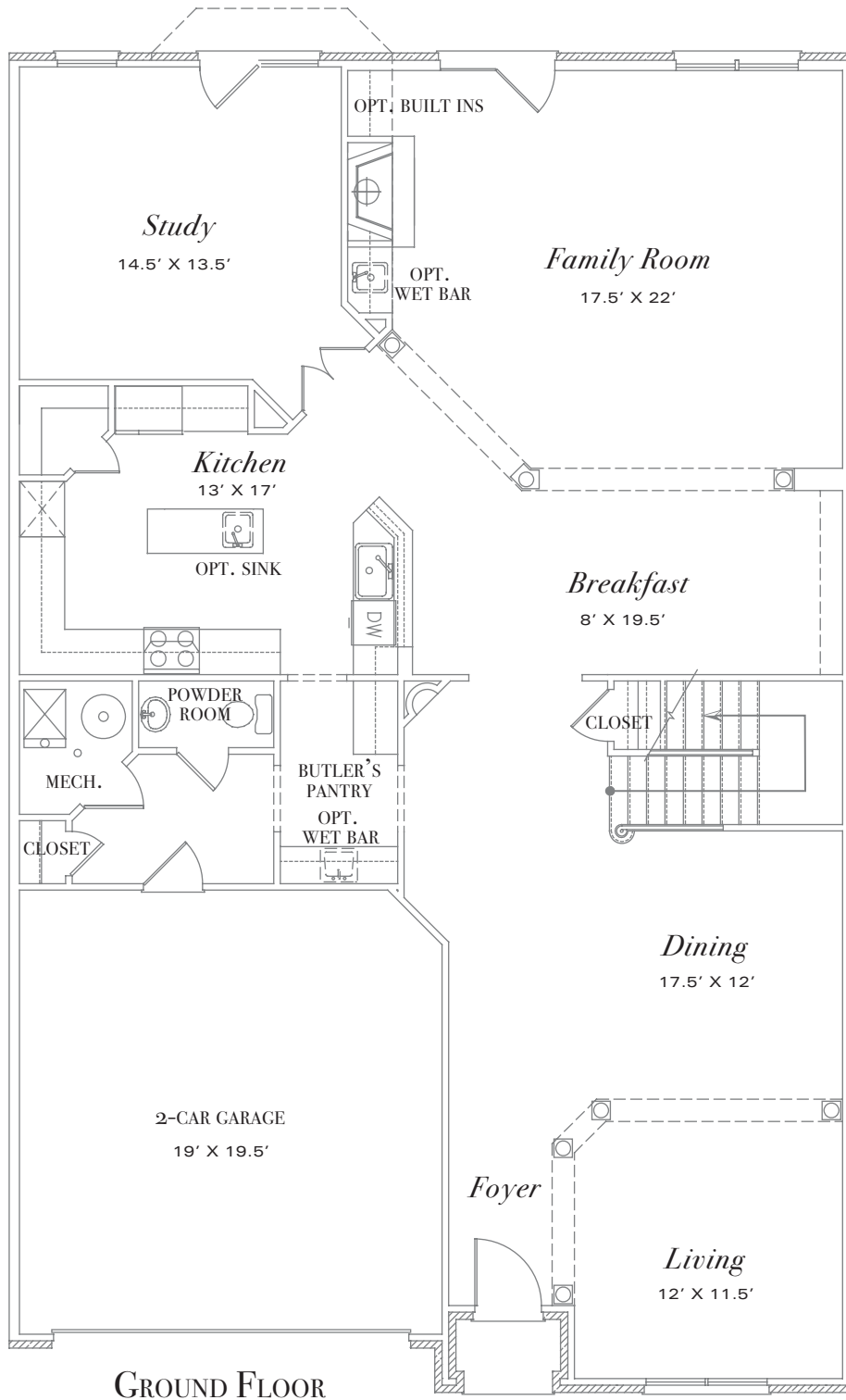
Farrington

Inspired by traditional 18th century architecture

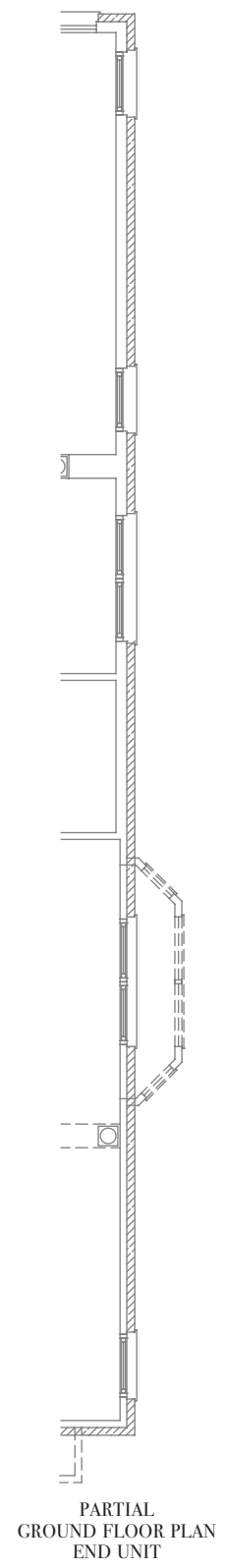
Grayson Hill presents classic modern homes for your enjoyment.

Our homes exemplify gracious living by defining a new era of luxury lifestyle.

The Farrington offers the perfect blend of charm and sophistication, featuring abundant formal and informal spaces. The first floor also features a spacious family room, a grand study, living room, and a beautiful dining room, all with ten-foot ceilings. The kitchen is a cook's dream and features ample counter space, and a cozy breakfast room. The second floor loft is perfect for an office or exercise space. An optional master suite is available on the first floor of this home.

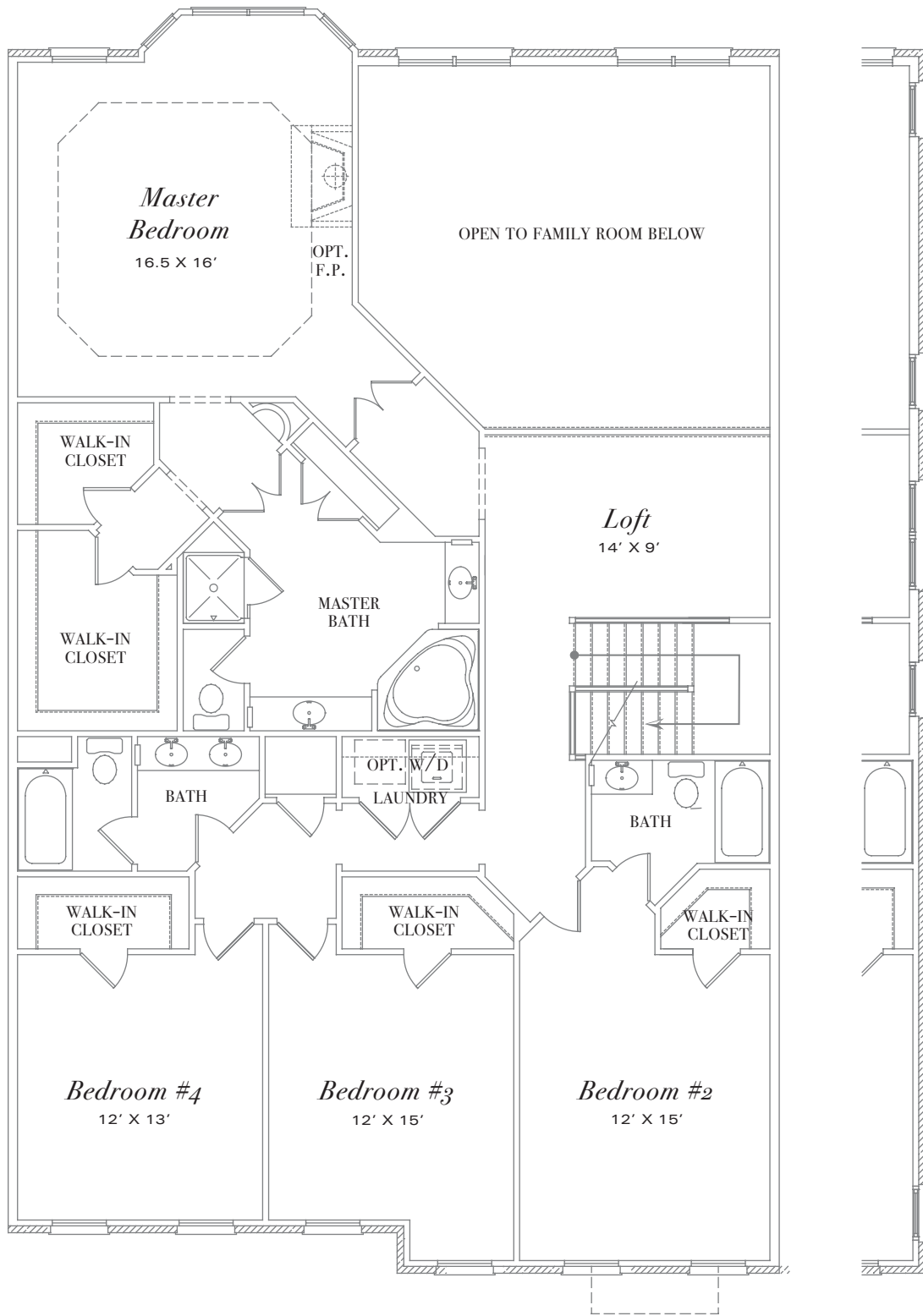


GROUND FLOOR



Farrington - A

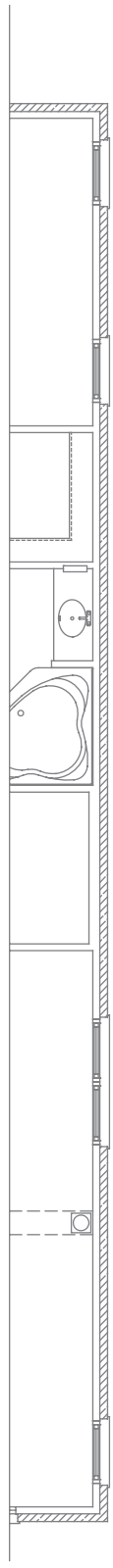
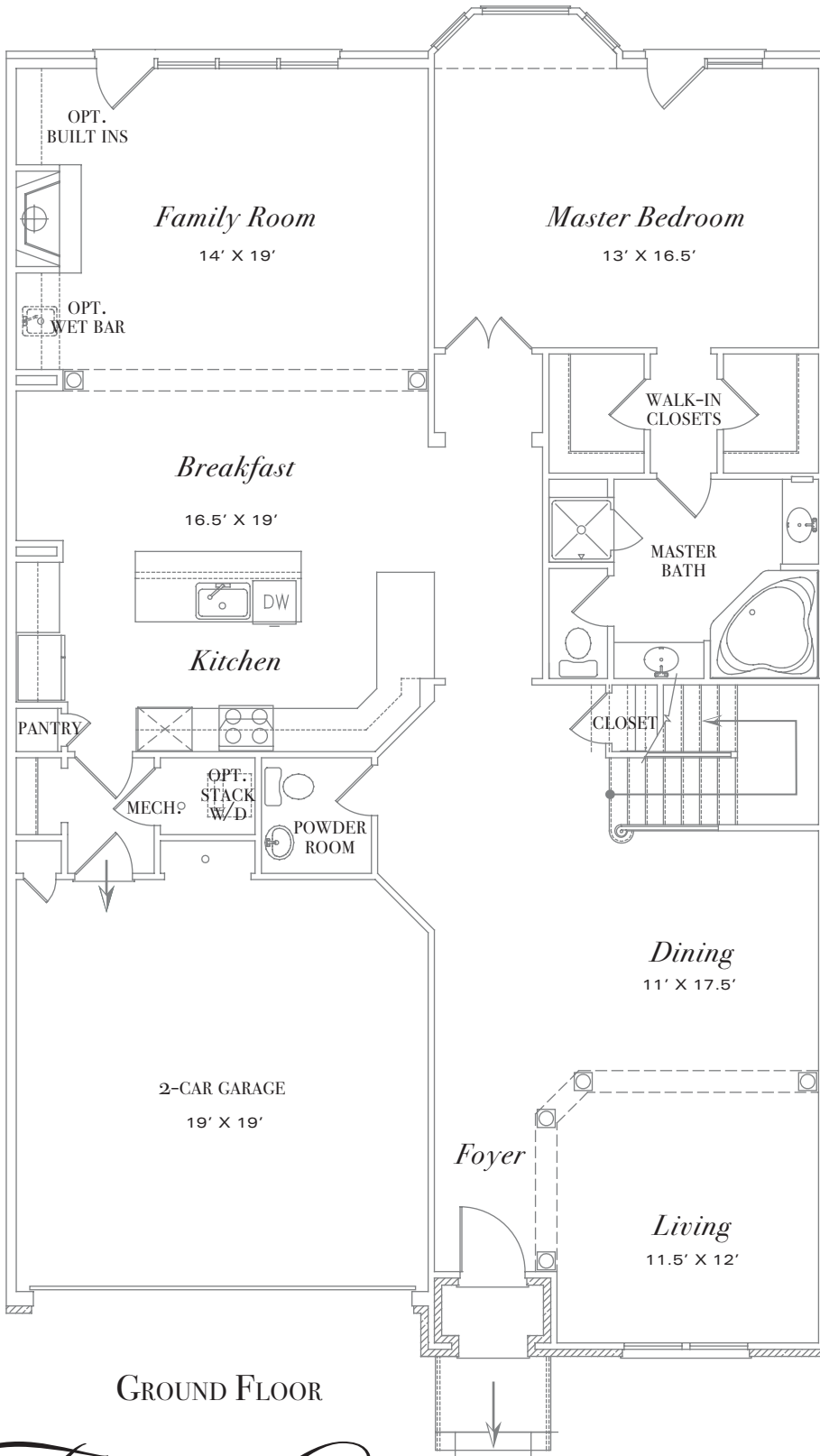
CEILINGS: 10' — APPRX. 3,400 — 3,700 SQ. FT.
SCALE: 1/8"=1'-0"



PARTIAL
SECOND FLOOR PLAN
END UNIT

2nd FLOOR

CEILINGS: 9'

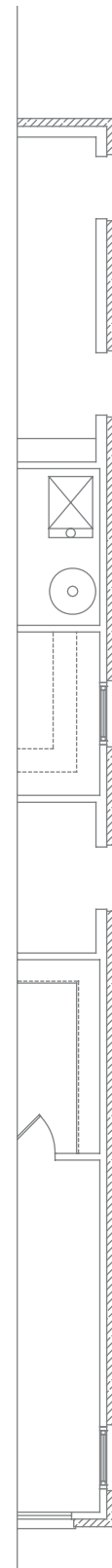
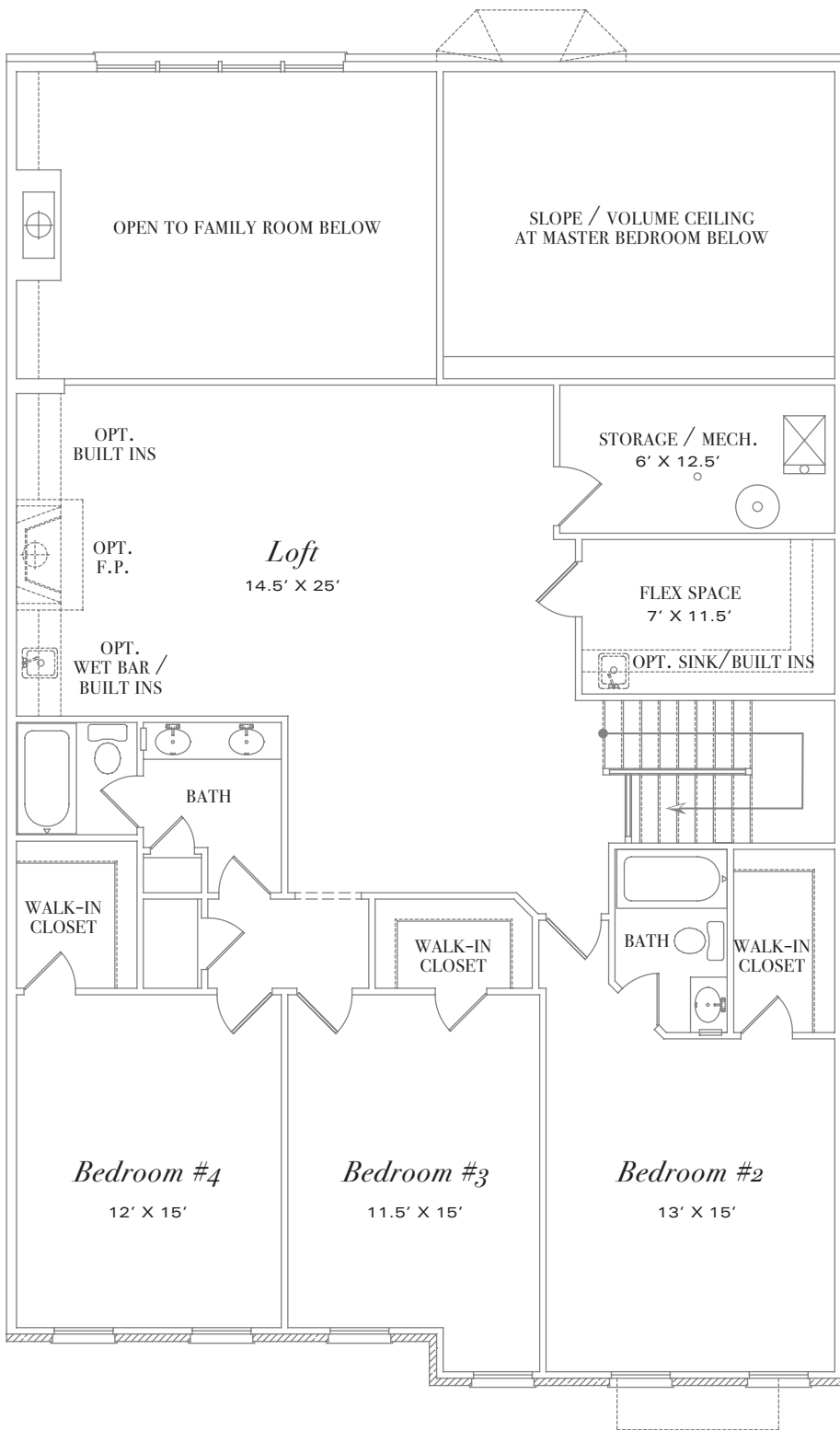


GROUND FLOOR

PARTIAL
GROUND FLOOR PLAN
END UNIT

Farrington ~B

CEILINGS: 10' — APPRX. 3,400 — 3,700 SQ. FT.
SCALE: 1/8"=1'-0"

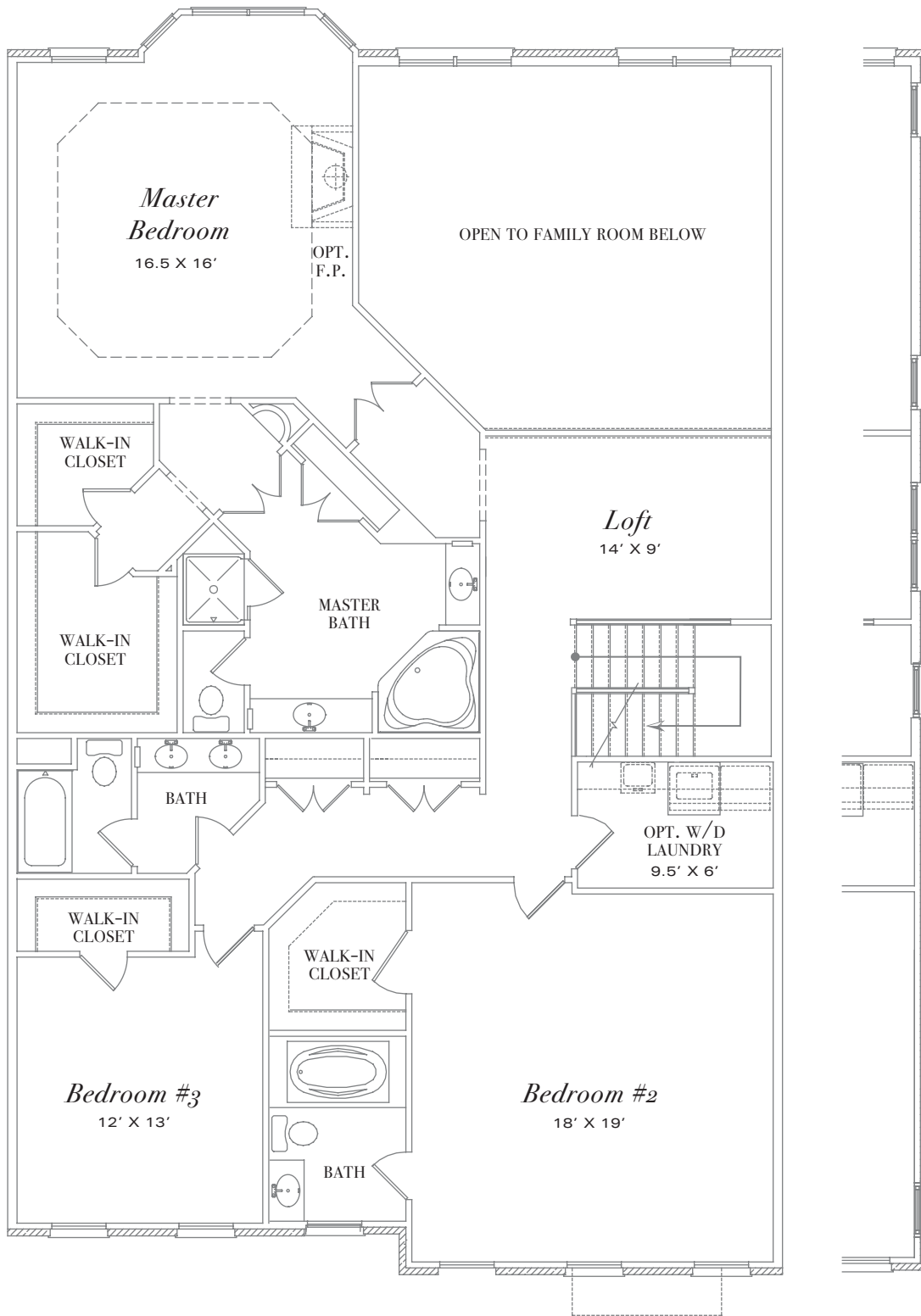


2nd FLOOR
CEILINGS: 9'

PARTIAL
SECOND FLOOR PLAN
END UNIT



THIS INFORMATION IS DEEMED RELIABLE BUT NOT GUARANTEED.
All details, dimensions, square footage, and illustrations are approximate and may vary from actual plans & specifications.

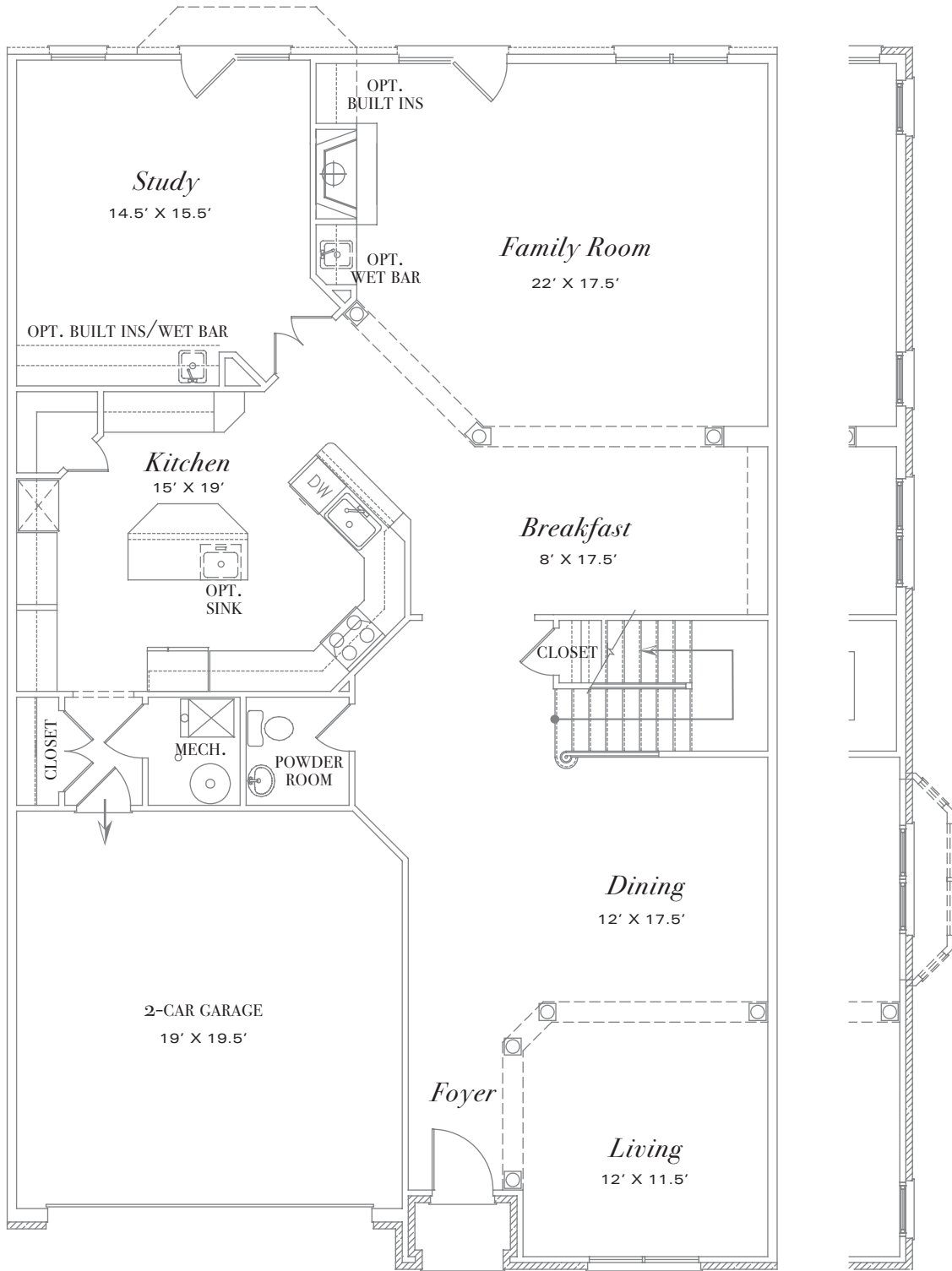


Farrington - A

ALTERNATE SECOND FLOOR

CEILINGS: 9' • SCALE: 1/8"=1'-0"

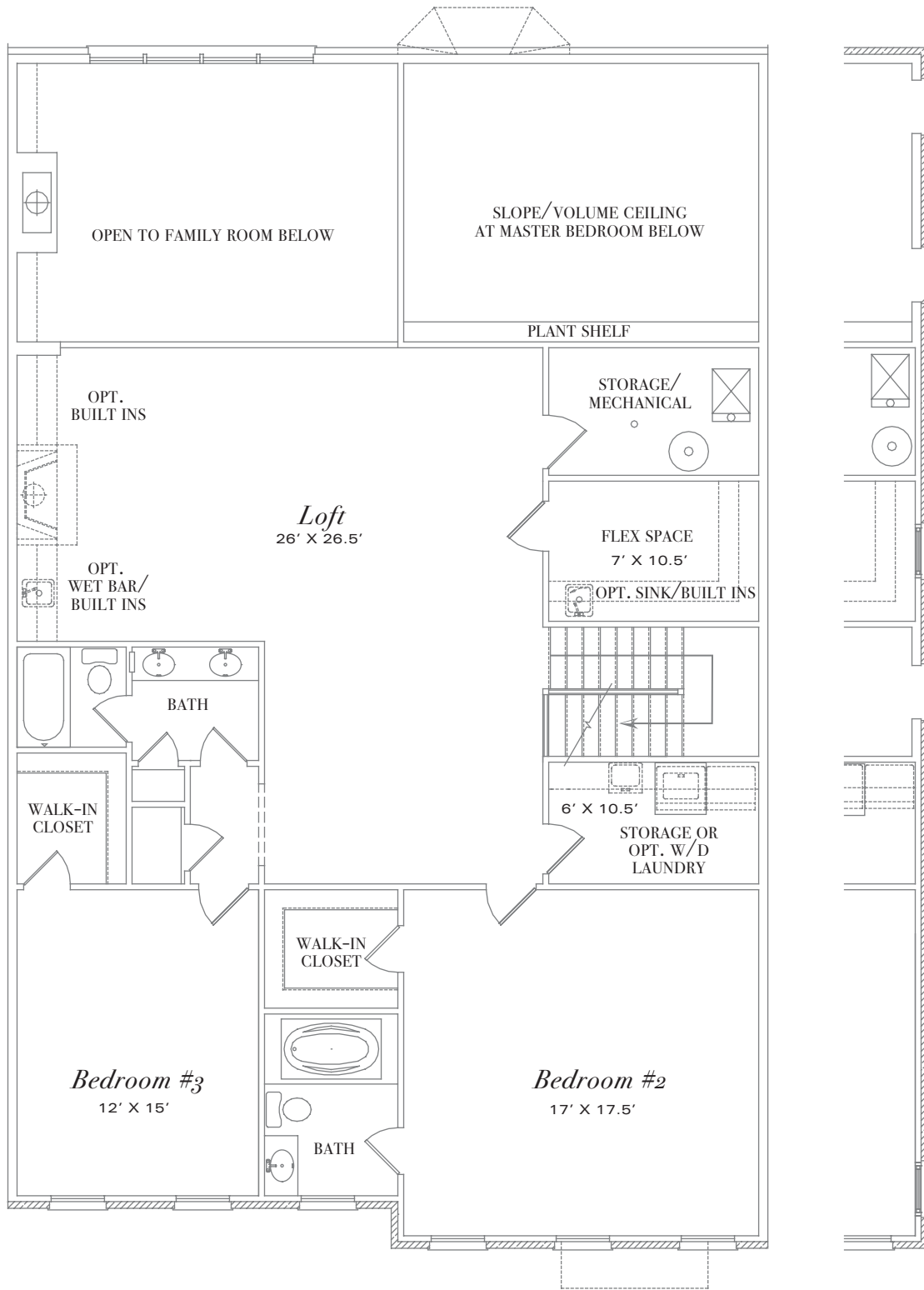
PARTIAL
ALT. SECOND FLOOR PLAN
END UNIT



PARTIAL ALTERNATE
GROUND FLOOR PLAN
END UNIT

ALTERNATE GROUND FLOOR

CEILINGS: 10'



Farrington-B

ALTERNATE SECOND FLOOR

CEILINGS: 9' • SCALE: 1/8"=1'-0"

PARTIAL
ALT. SECOND FLOOR PLAN
END UNIT