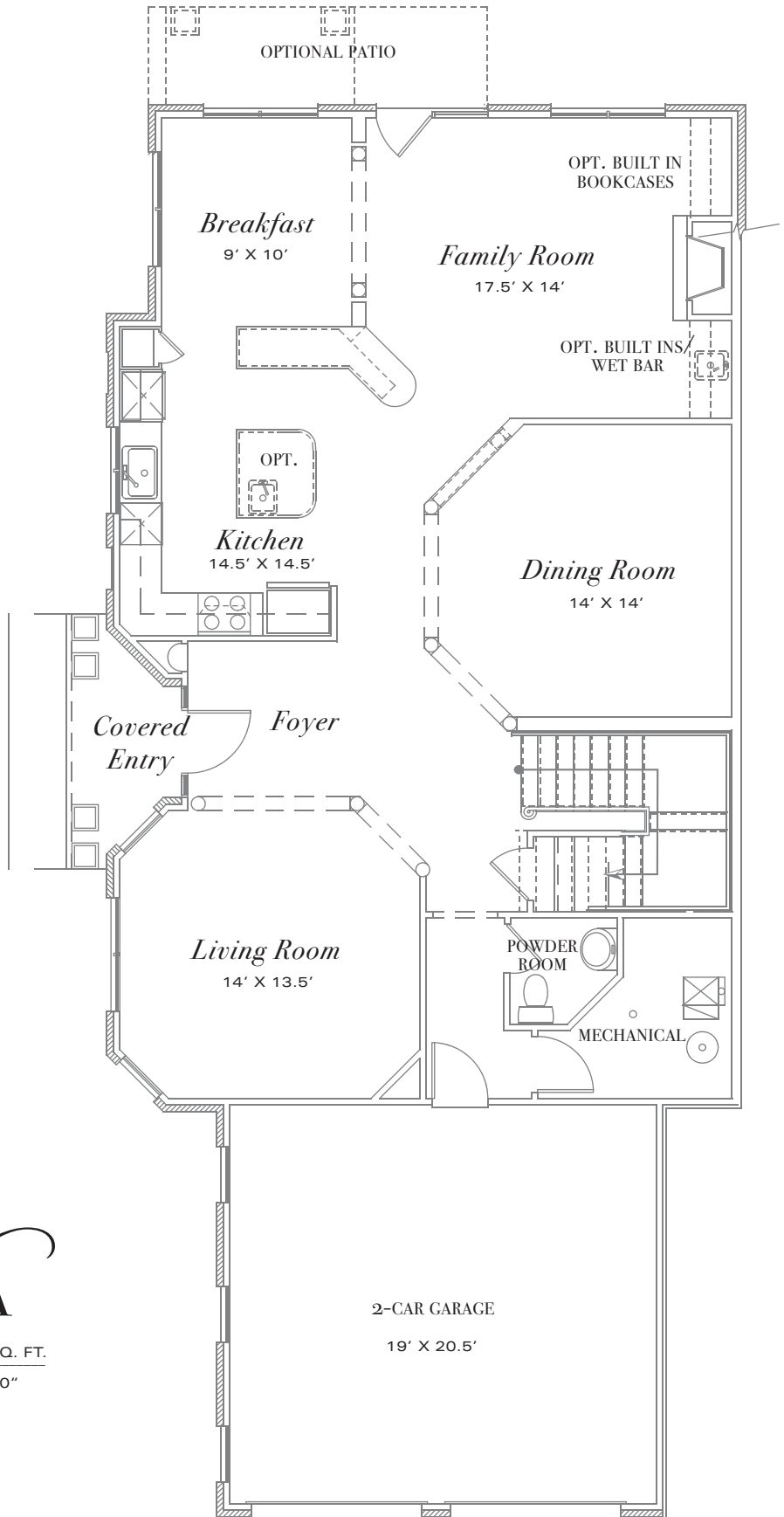




Hamstead

Inspired by traditional 18th century architecture,
Grayson Hill presents classic modern homes for your enjoyment.
Our homes exemplify gracious living by defining a new era of luxury lifestyle.
Located at either end of our Executive buildings, the Hamstead is a quiet,
intimate place to call home. It features grand ten-foot ceilings on the first floor
and nine-foot ceilings on the second floor. The second floor
also boasts a master bedroom suite with a charming sitting room,
luxurious bath, and his/her closets. An optional master suite
is available on the first floor of this home.

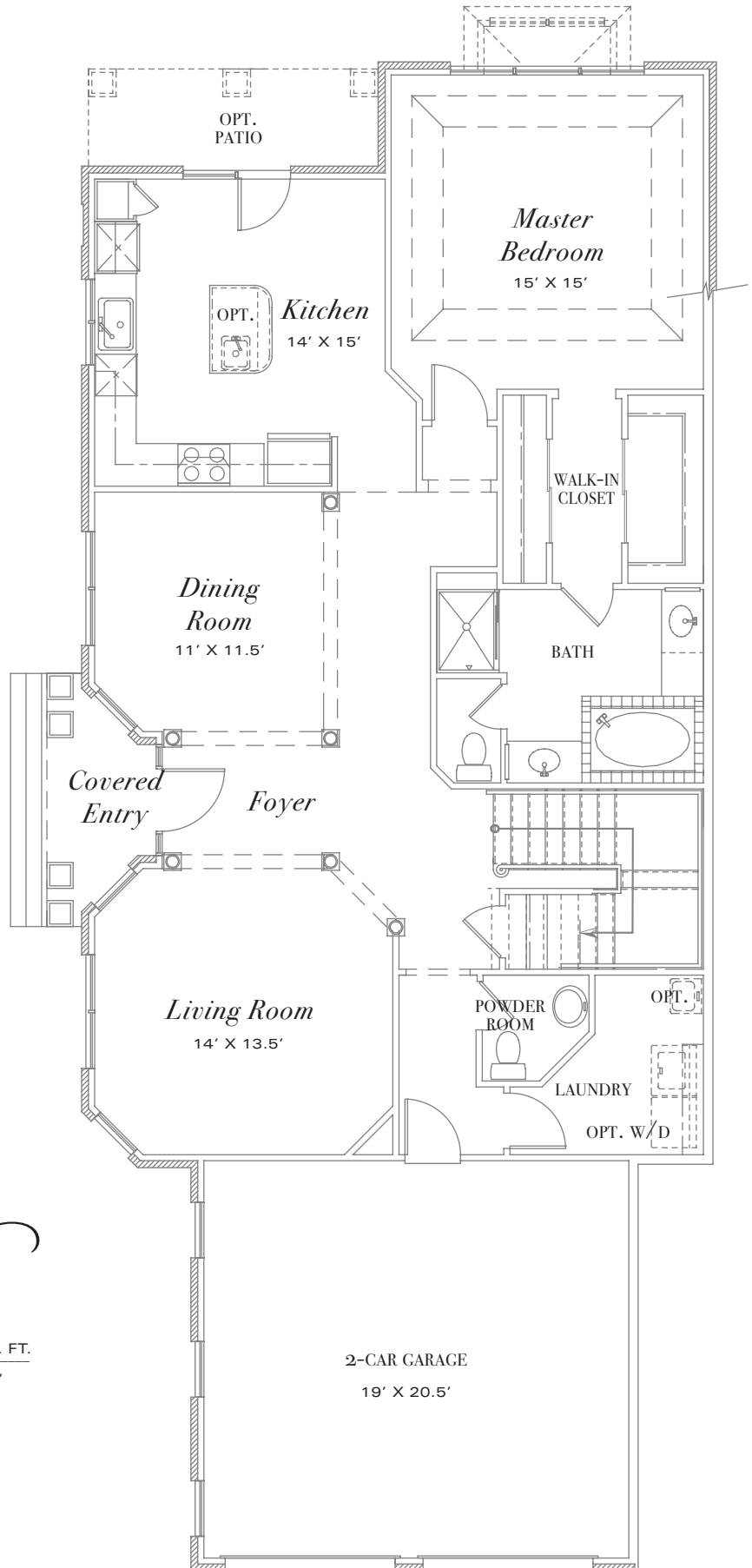
GROUND FLOOR
CEILINGS: 10'



Hamstead-A

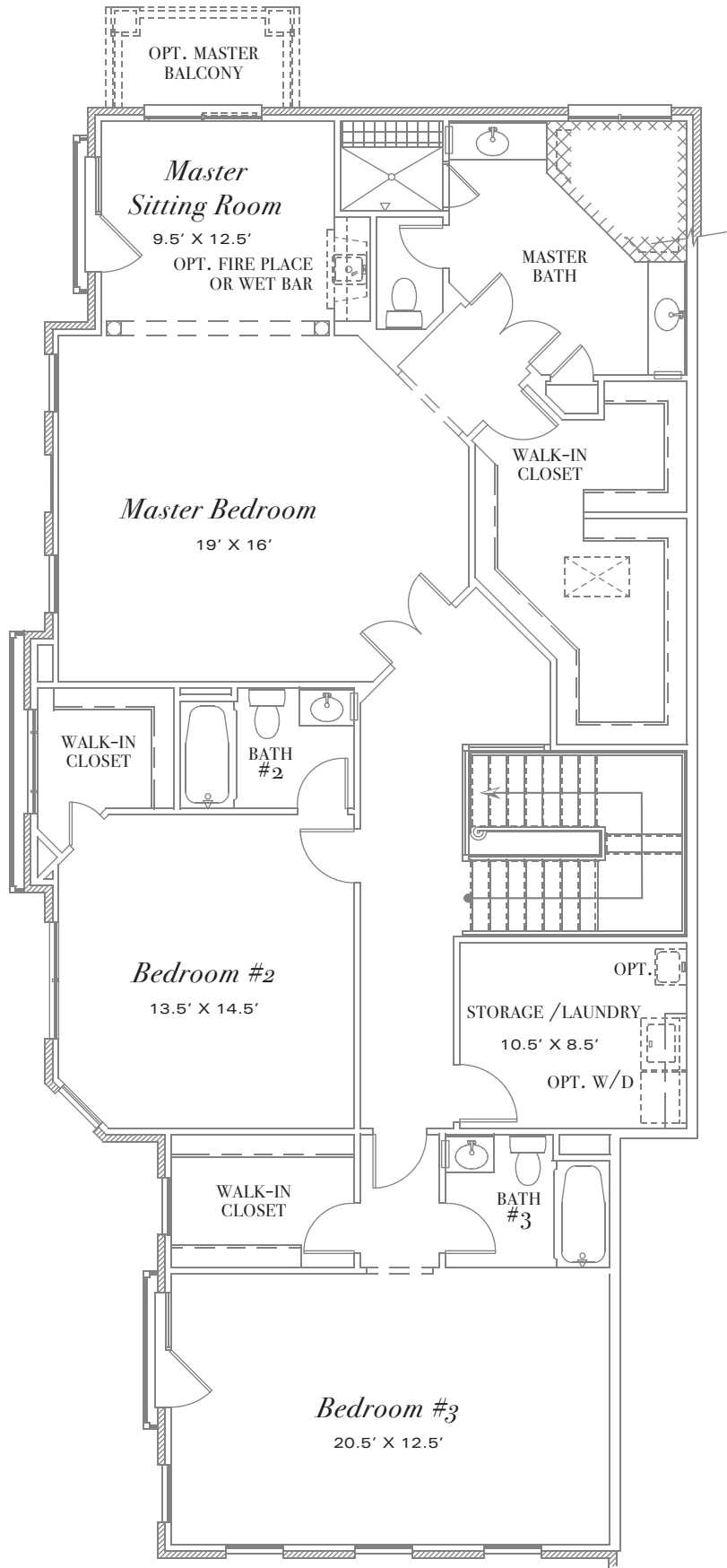
APPRX. 3,200 SQ. FT.
SCALE: 1/8"=1'-0"

GROUND FLOOR
WITH MASTER BEDROOM DOWN
CEILINGS: 10'



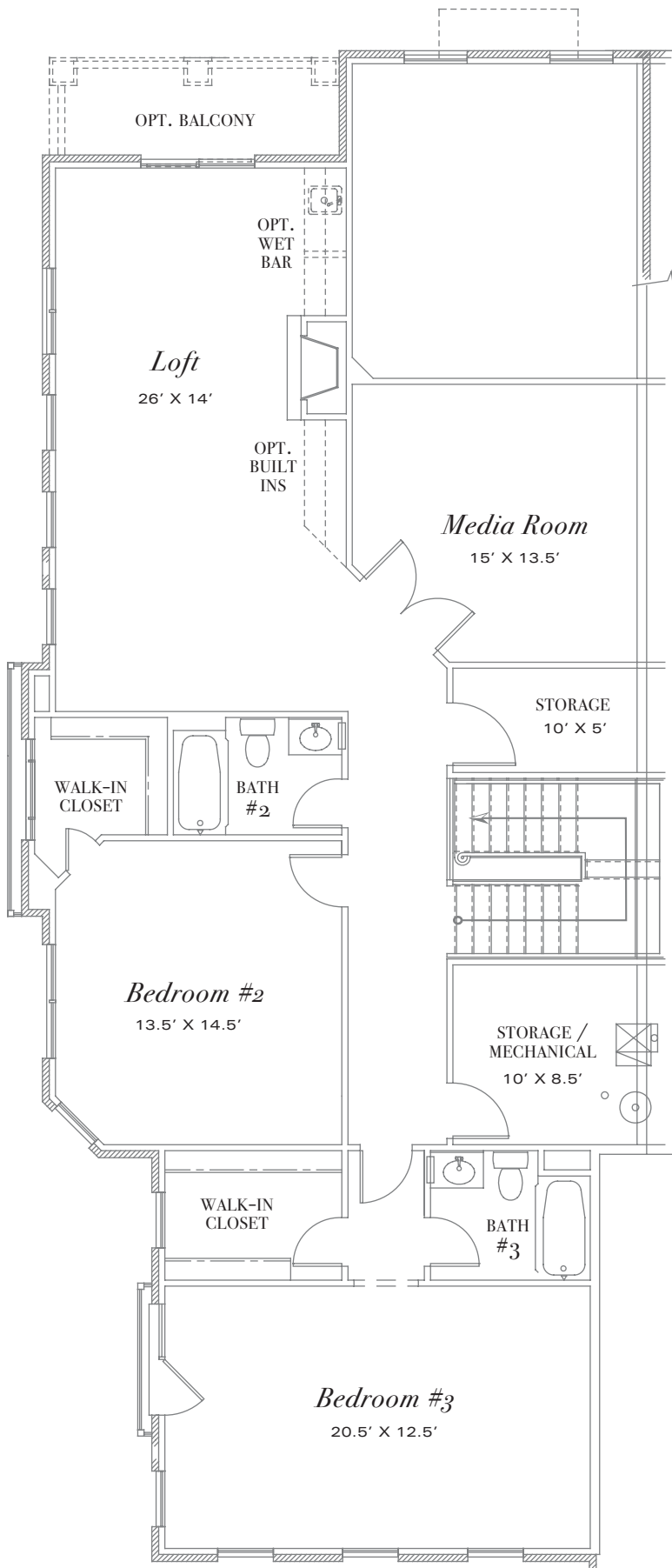
Hamstead-B

APPRX. 3,200 SQ. FT.
SCALE: 1/8"=1'-0"



2nd FLOOR

CEILINGS: 9'



ALTERNATE 2nd FLOOR

CEILINGS: 9'



THIS INFORMATION IS DEEMED RELIABLE BUT NOT GUARANTEED.
 All details, dimensions, square footage, and illustrations are approximate and may vary from actual plans & specifications.